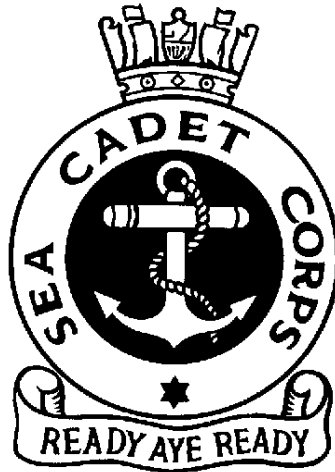


The Sea Cadet Corps



JUNIOR SEA CADET AND NEW ENTRY WORK BOOK

This work book contains all that you should know at the end of your Part 1 New Entry Training. You will be assessed on your knowledge of these subjects before being fully enrolled. You should make sure that you have completed the book before requesting advancement.

Inside the back cover of this book is a page to record points for specialisations, boatwork and proficiencies. They will be used to gain advancement.

NAME:

DIVISION:

UNIT:

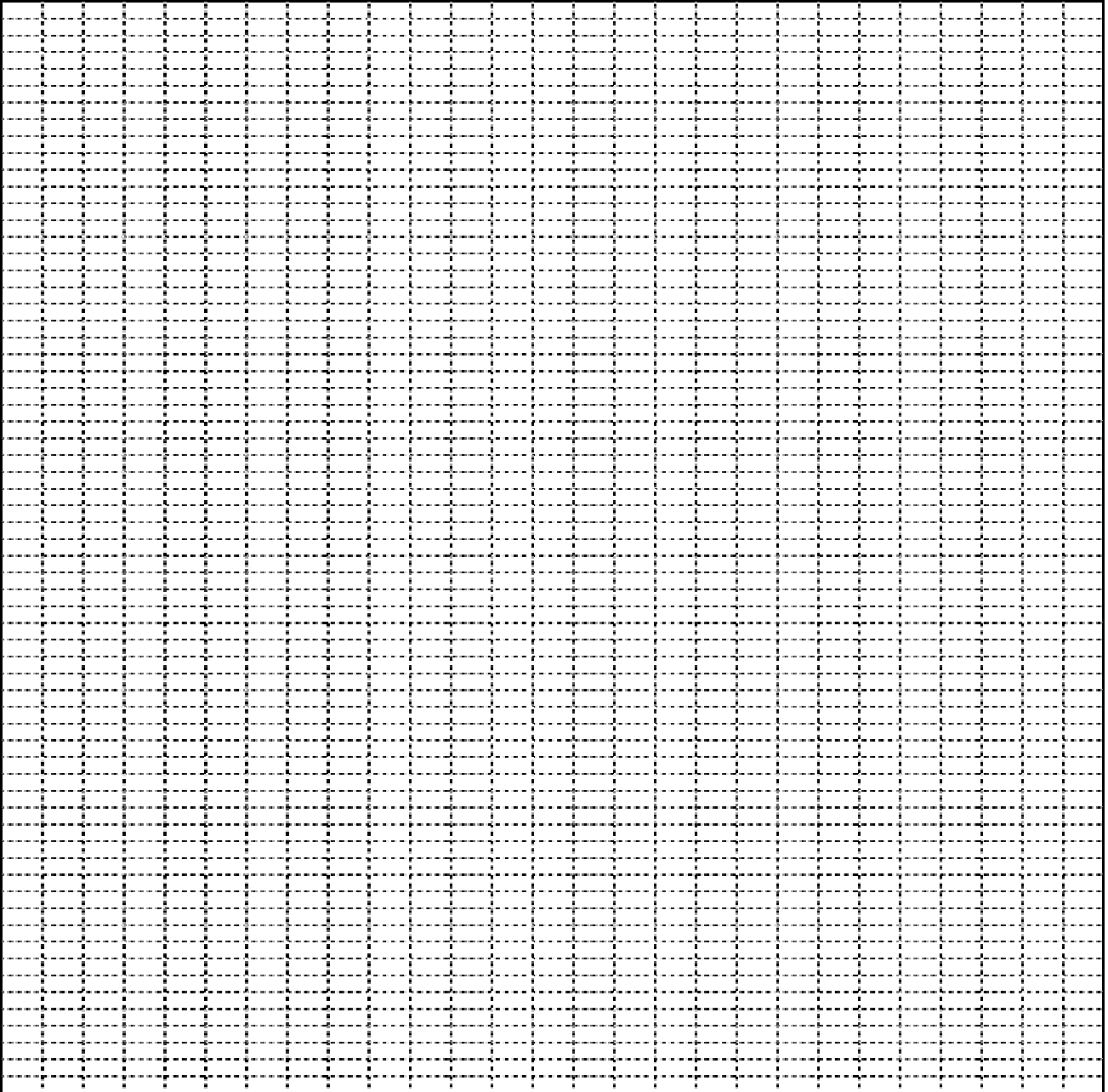
DATE JOINED UNIT:

DATE FULLY ENROLLED:

SHORT TITLE – NEWB
THIRD EDITION
APRIL 2000

C1(J1) TOUR OF UNIT HEADQUARTERS

1. Draw a plan of your unit HQ (the grid will aid your layout).
2. Mark the positions of the fire exits and escape routes and muster point.
3. What action must you take in the event of a fire?



3. Show where you would find the following:

Ship's Office

CO's Cabin

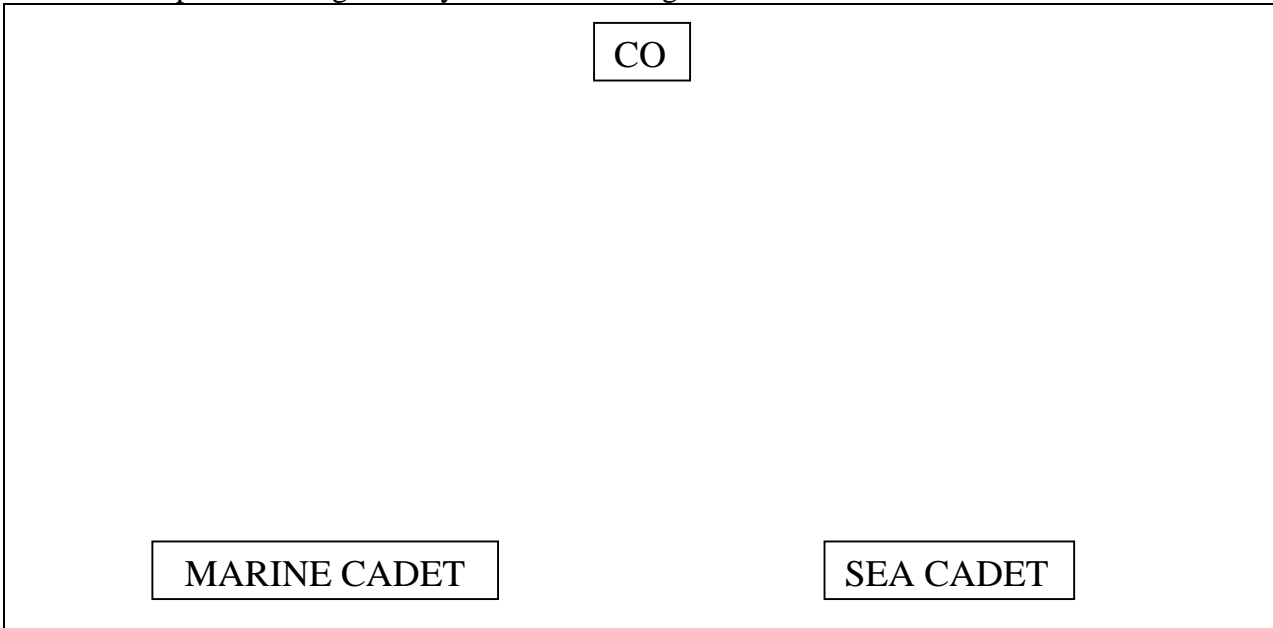
Maindeck

Fire Muster Point

C2(J2) UNIT ORGANISATION

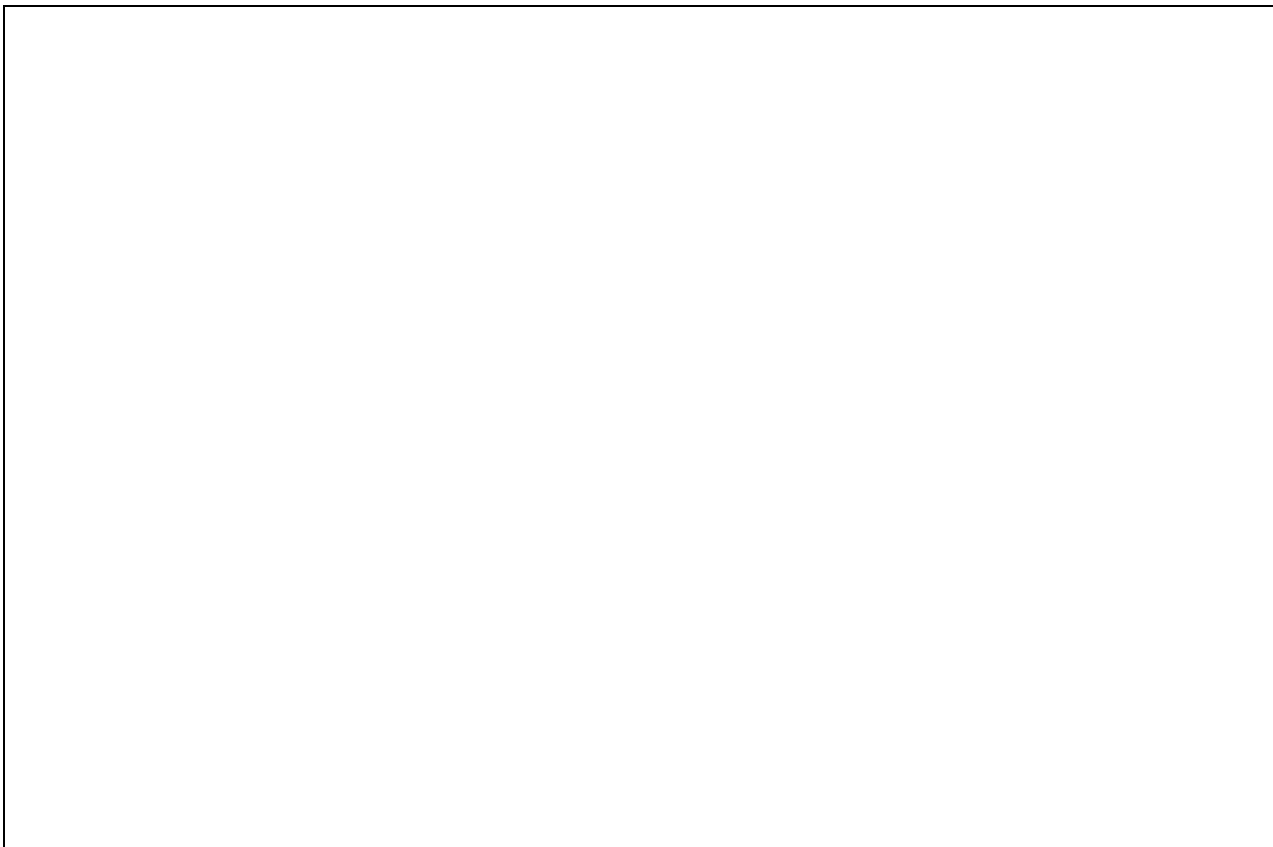
Staff and Cadets

1. Complete the diagram of your Unit staff organisation.



2. Who is your Divisional Officer?

3. Make a diagram of the organisation of the cadets in your Unit.



Duty Watch

1. What are the duties of these personnel?

Duty Officer

Duty Senior Rate

Quartermaster

Boatswain's Mate

Orders and Messages

1. What do the following calls mean? Use dotted lines to describe the pattern of high and low note that make up these calls.

Still

Carry On

General Call

2. Write down the way to carry a simple message from one instructor to another.

C3(J3) UNIT ACTIVITIES

1. Complete this plan of the Unit's activities that take place every week.

DAY	ACTIVITY	START	FINISH
Sun			
Mon			
Tue			
Wed			
Thu			
Fri			
Sat			

2. What weekend activities and other courses does the Unit regularly offer?

3. What fund raising activities does the Unit hold?

4. What sporting activities can cadets take part in?

5. What events in the local community does the Unit take part in?

C4(J4) THE AIMS OF THE SEA CADET CORPS

1. Why did you join the SCC?

2. Write down the Aims Of The Sea Cadet Corps.

C5(J5) THE SEA CADET CORPS PROMISE

1. Write down the Sea Cadet Corps Promise.

C6(J6) ADVANCEMENT IN THE SEA CADET CORPS

1. What is Part 1 Training?

2. What is Part 2 Training?

3. Fill in this table with the names of all the cadet rates in the SCC, any minimum ages and the number of points required to be advanced to each rate.

		AGE	PTS
	STAFF	18	
NE	NEW ENTRY	12	

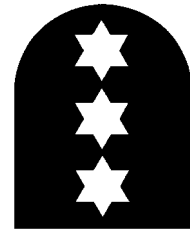
C7(J7) SEA CADETS CORPS RANKS AND RATES

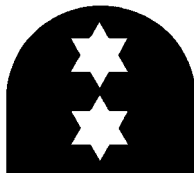
Cadet Ratings

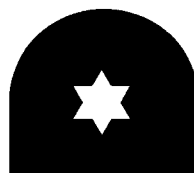
1. What rate do these badges represent?











2. Write the name of the specialisation under each badge.

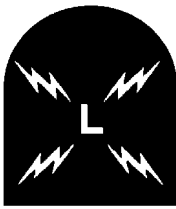


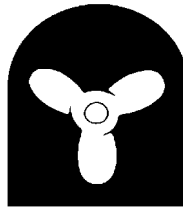


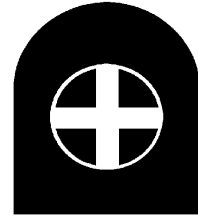




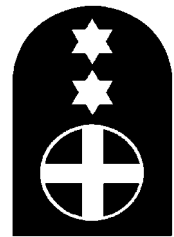








3. What class are they?



4. One star above indicates

5. Two stars above indicates

Good Conduct Badges

1. Write in the box provided, the value of each badge.







Adult Senior Ratings Badges

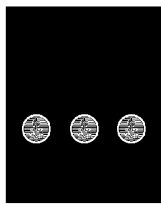
1. Where do Senior Ratings wear these badges?



2. On Number 1 uniform, where do Senior Ratings wear these badges?



Petty Officer



Chief Petty Officer



Area Warrant Officer

Adult Specialist Instructor Badges (Petty Officers & Chief Petty Officers Only)



1. Where do Petty Officers wear these badges?

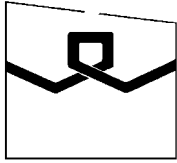
- a. On Number 1 uniform.
- b. On Number 4 uniform.

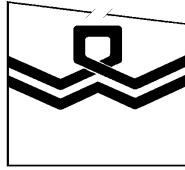
2. Where do Chief Petty Officers wear these badges?

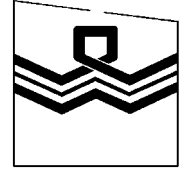
- a. On Number 1 uniform.
- b. On Number 4 uniform.

Officers

1. Write the Rank of the Officer under each drawing of the lace.







2. Where do officers wear this lace?

- a. On Number 1 uniform.
- b. On Number 4 uniform.

Marine Cadet Detachment Ranks

OFFICERS

INSIGNIA	RANK	SEA CADET SECTION EQUIVALENT

SENIOR NON-COMMISSIONED OFFICERS (SNCO's)

MARINE CADET RANKS

White Tape		
No Badge		
No Badge	Marine Cadet	Cadet

C8(J9) SEA CADET UNIFORM AND ITS HISTORY

1. List here the items of Sea Cadet Uniform and any information you have found out about them.

a. Number 1 Uniform.

(1)
(2)
(3)
(4)
(5)
(6)
(7)
(8)
(9)
(10)
(11)
(12)

b. Number 4 Uniform.

(1)
(2)
(3)
(4)
(5)

C9(J10) REASONS FOR DRILL

1. Put a line through any of the following which are not reasons for doing parade training.
 - a. To develop power of command.
 - b. So that the instructor can shout.
 - c. To handle large number of cadets or ratings easily.
 - d. To make you bored.
 - e. To develop self discipline and smartness.
 - f. To make you tough.
 - g. To develop self confidence.
 - h. To get you used to standing for a long time.

C10(J11) SQUAD DRILL

Standing to attention	Standing at ease	Standing easy
Falling in/out (1,2,3 ranks)	Dressing	Dressing without intervals
Numbering	Left/Right turn at halt	About turn at halt
On/Off berets and caps	Standing at ease/easy	Returning to attention

Saluting – how, who, when, where and why

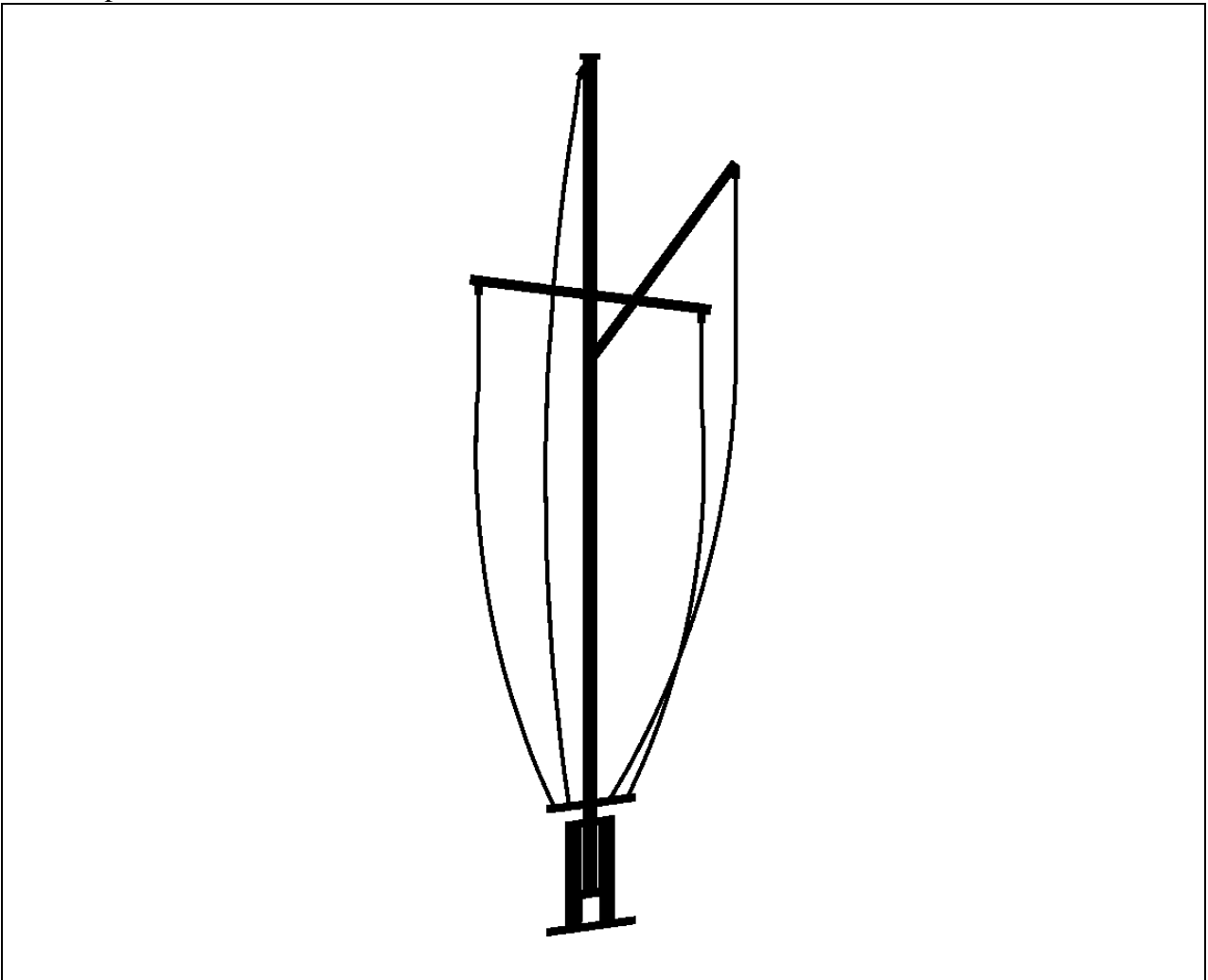
HAS UNDERTAKEN SQUAD DRILL TRAINING TO THE REQUIRED STANDARD

SIGNED	NAME	RANK/RATE	DATE
---------------	-------------	------------------	-------------

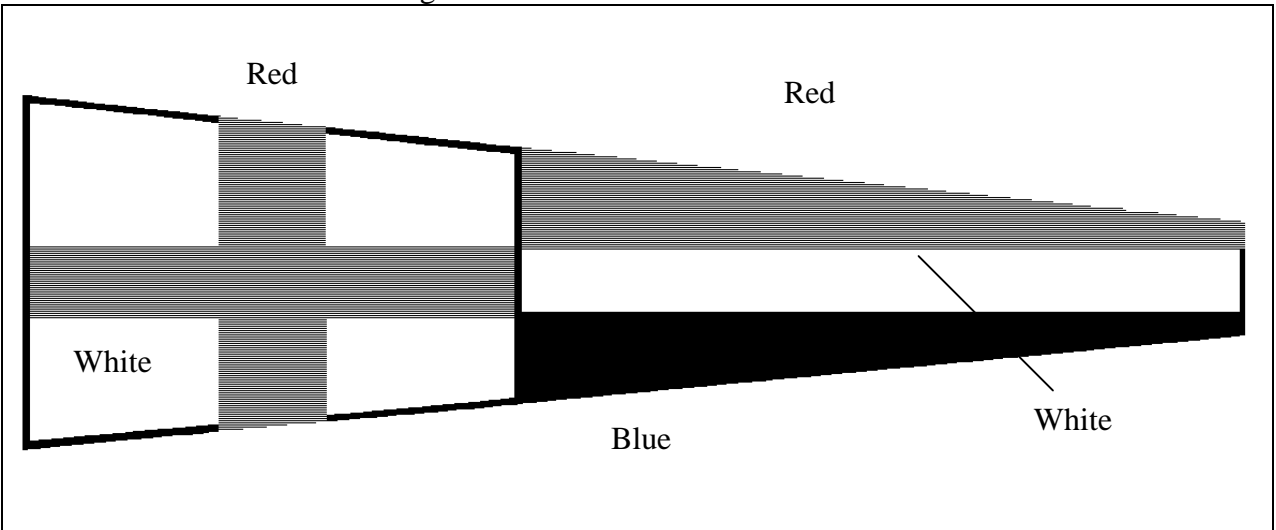
C11(J12) COLOURS & EVENING COLOURS CEREMONIES

1. Draw a plan of your Unit main deck or parade ground, showing the layout for Colours and Evening Colours (Sunset).

2. Label this sketch of a mast. Add to the drawing an ensign, a preparative flag and a church pennant.

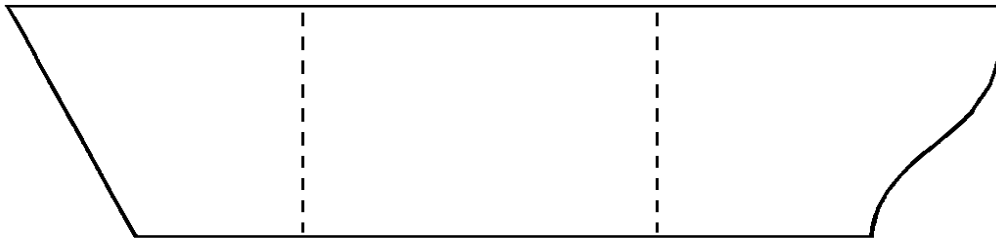


3. Which two National Flags does the Church Pennant include?

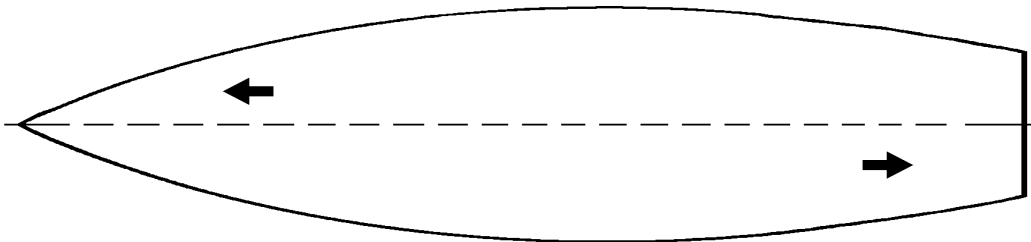


C12(J13) PARTS OF A SHIP

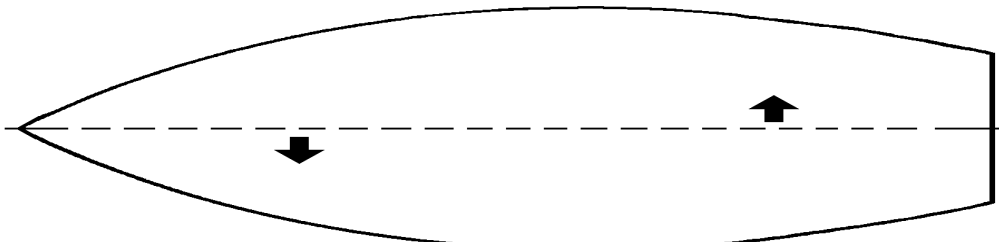
1. Label the sketches below with the parts of ship requested.



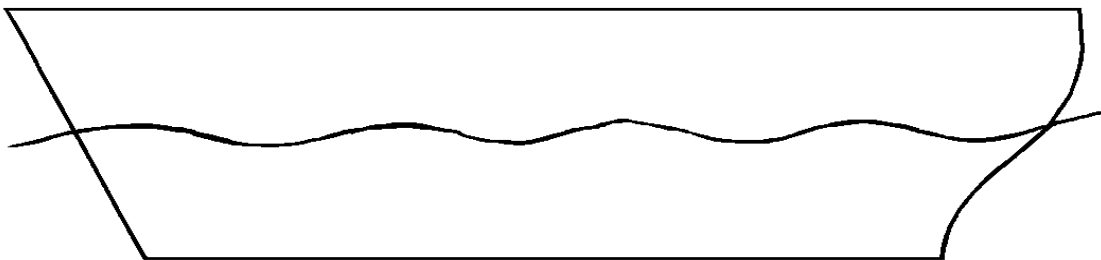
Parts Of The Hull



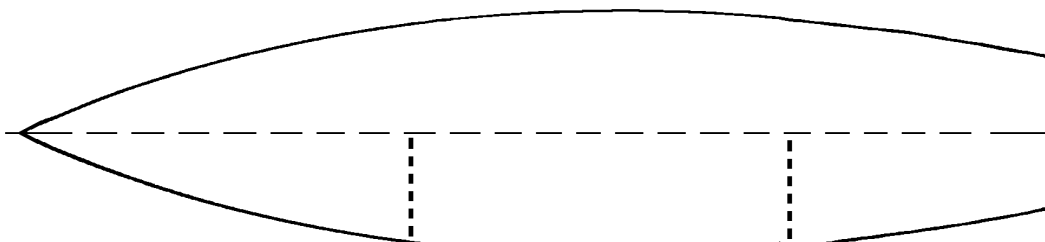
Parts Of The Hull



Parts Of The Hull



Hull Surfaces



Position Athwartships

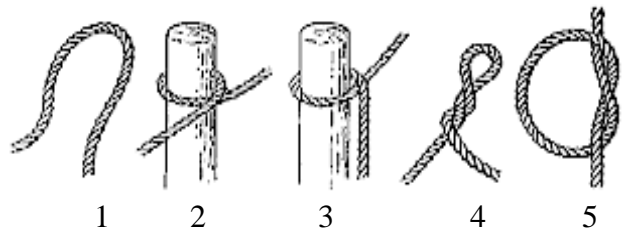
C13(J14) GENERAL SEA TERMS

1. Explain the following general sea terms.

Hatch	Ladder
Deck	Deckhead
Bulkhead	Heads
Scuttle	Deadlight
Dhoby	Libertymen
To ship...	To unship...
Forecastle (pronounced foke-sel)	Quarterdeck
Maindeck	Bridge

C14(J15) BENDS AND HITCHES

Most bends and hitches consist of a combination of two or more of these five elements.



1. Name the elements.

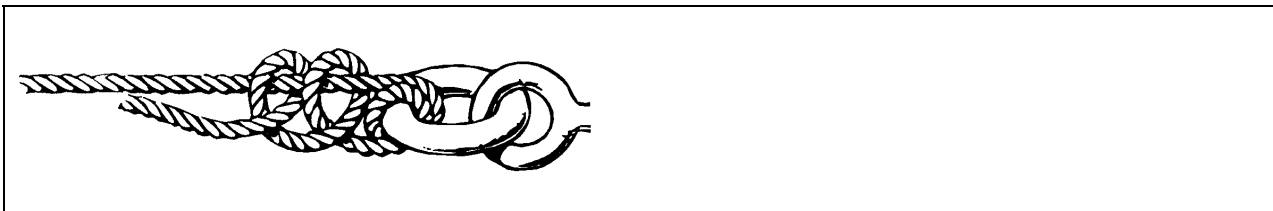
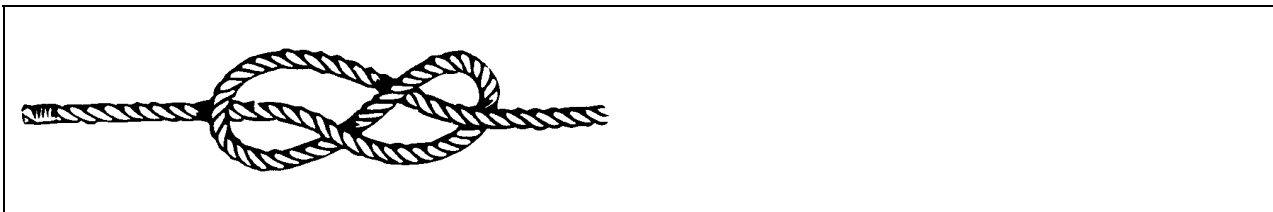
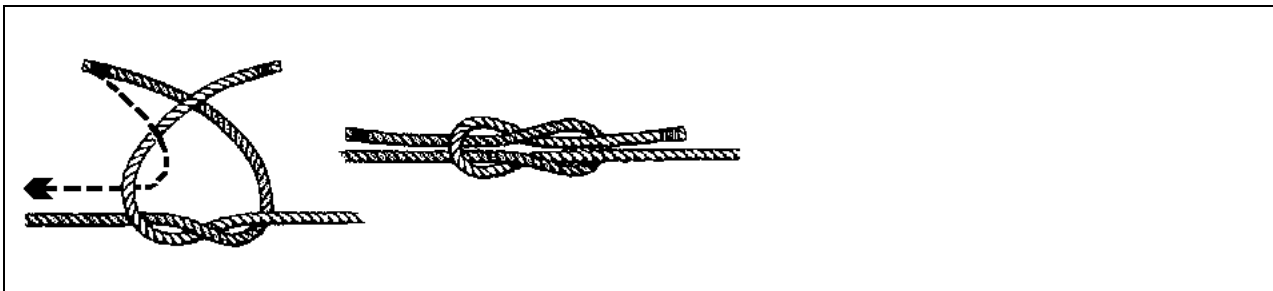
1	2	3	4	5
---	---	---	---	---

2. A knot is

3. A bend is

4. A hitch is

5. Name these three "knots" and describe their main uses.



ALL BENDS AND HITCHES TIED CORRECTLY

SIGNED

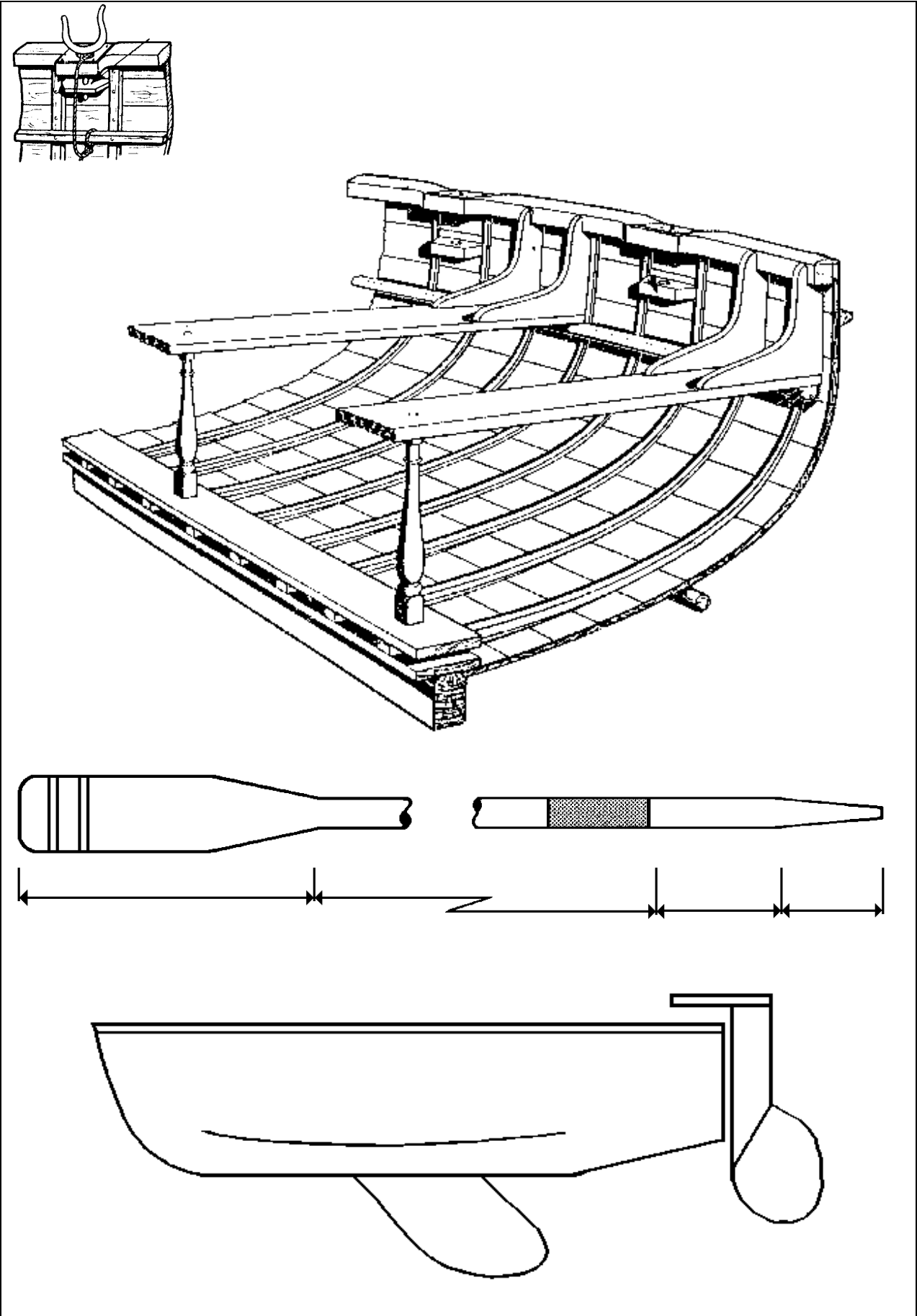
NAME

RANK/RATE

DATE

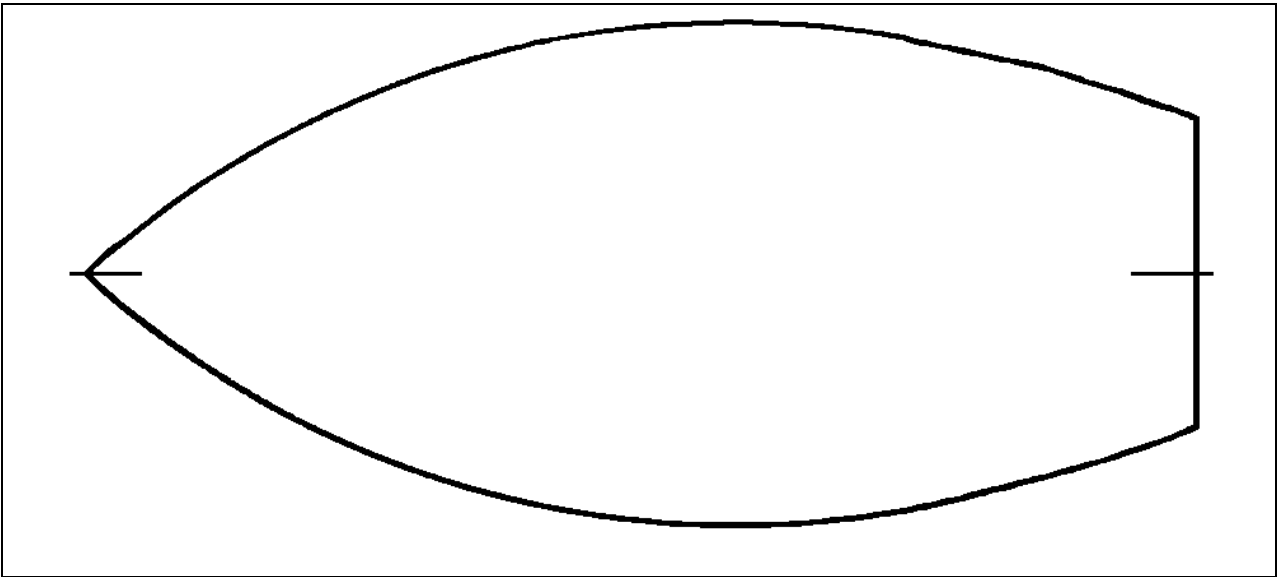
C15(J16) PARTS OF A BOAT AND AN OAR

Label as many parts of the drawings as you can.



C16(J17) MANNING A BOAT

1. Add to the plan of the Admiralty Sea Cadet dinghy (ASC) the names and positions of all the crew members.



2. What are their duties?

C17(J18) BEHAVIOUR IN A BOAT

1. List the standards required.

Dress	
Behaviour	
Safety	
Lifejacket	
Appearance of boat	

C18(J19) PRACTICAL PULLING

1. Describe the following Pulling Orders. Tick those orders which are obeyed immediately and do not require a further stroke after the order is given.

PULLING ORDER	DESCRIPTION
Ship your crutches	
Ship your oars	
Give way together	
Hold water	
Oars	
Lay on your oars	
Back together	
Stroke together	
Easy all	
Mind your oars	
Eyes in the boat	
Bow	
Way enough	
Boat your oars	
Bear Off	

HAS TAKEN PART IN PRACTICAL PULLING TRAINING

SIGNED **NAME** **RANK/RATE** **DATE**

C19(J20) HYGIENE

1. Why must you:

Bath and wash?	
Cut hair and nails?	
Wash hands before meals?	
Shower after work or games etc?	
Wash your hands after using the heads?	

C20(J21) FITNESS AND SWIMMING

1. Take part in:

- a. Daily exercises.
- b. Recreational games.
- c. Swimming.

HAS TAKEN PART IN A GOOD SELECTION OF PHYSICAL AND RECREATIONAL TRAINING

SIGNED NAME RANK/RATE DATE

C21(J22) SCOPE OF FIRST AID

What is First Aid?	
The object of First Aid is?	
Some dangers to the First Aider are?	
Typical contents of a First Aid Kit.	
Summoning help in and emergency.	
Making an Emergency telephone call.	

C22(J23) FIRE PREVENTION

<p>Procedure upon discovering a fire.</p>	
<p>What is the Unit fire drill procedure?</p>	
<p>What is YOUR fire muster point?</p>	
<p>What are the escape routes from the Unit?</p>	

NEW ENTRY TO CADET WORK BOOK